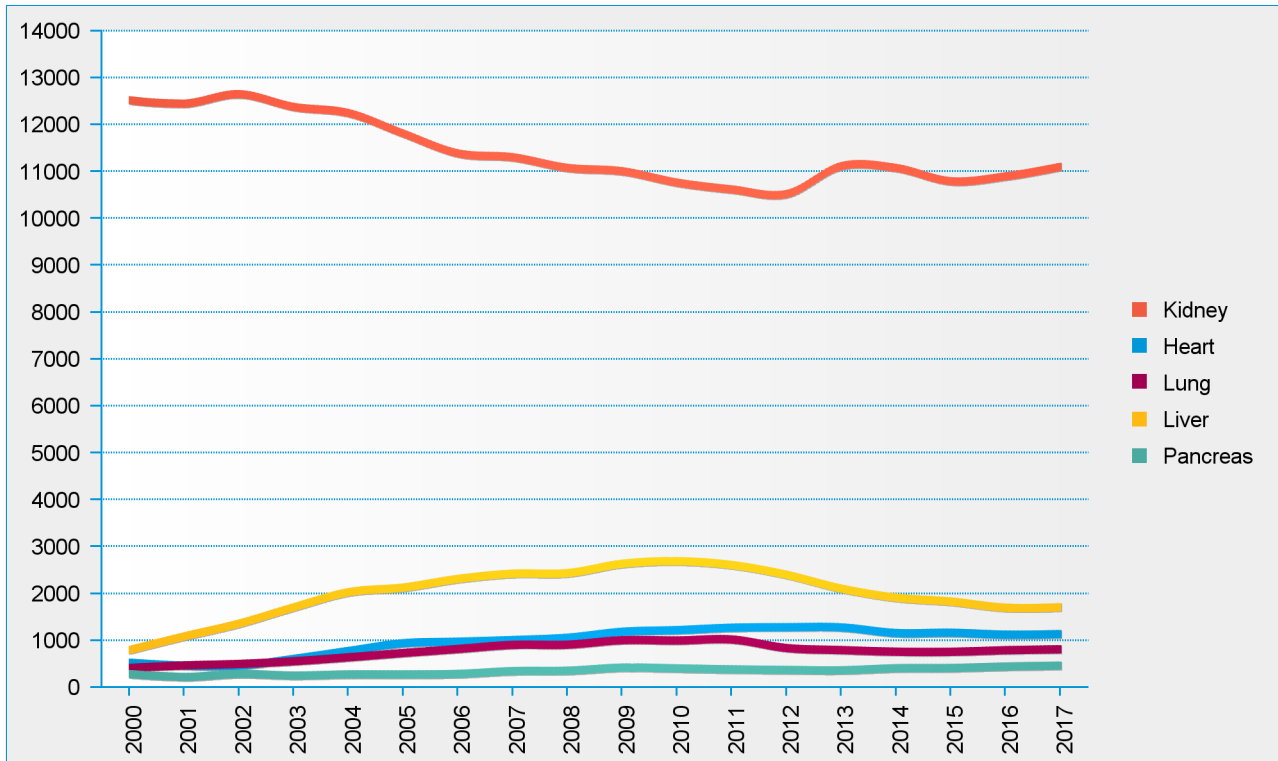


## Active waiting list (at year-end) in All ET, by year, by organ

Active waiting list	2008	2009	2010	2011	2012	2013	2014	2015	2016	2017
kidney	11082	11010	10768	10622	10525	11120	11080	10797	10901	11105
heart	1064	1191	1226	1277	1287	1283	1164	1170	1130	1141
lung	916	1011	1004	1026	844	800	766	764	797	817
liver	2442	2641	2695	2614	2406	2111	1918	1835	1704	1714
pancreas	361	426	410	389	376	369	413	418	449	468
<b>Total patients</b>	<b>15397</b>	<b>15744</b>	<b>15591</b>	<b>15499</b>	<b>15027</b>	<b>15292</b>	<b>14928</b>	<b>14560</b>	<b>14533</b>	<b>14773</b>

statistics.eurotransplant.org : 3022P\_All ET : 10.01.2018 : patients waiting for multiple organs are counted for each organ

## Active waiting list (at year-end) in All ET, by year, by organ

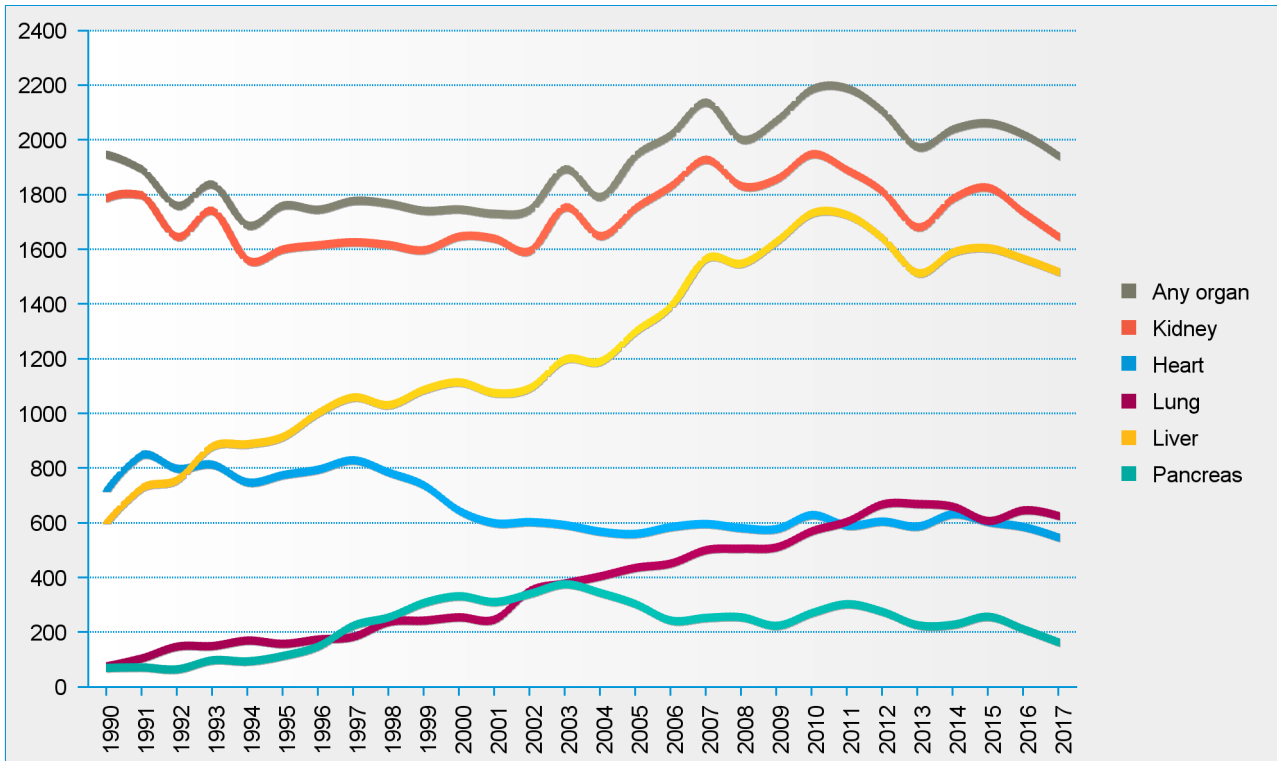


## Deceased donors used in All ET, by year, by organ

Donors used	2008	2009	2010	2011	2012	2013	2014	2015	2016	2017
kidney	1833	1859	1950	1891	1813	1682	1788	1827	1736	1647
heart	583	580	631	592	607	589	634	605	587	548
lung	508	513	572	607	670	671	661	609	648	627
liver	1550	1631	1734	1727	1642	1515	1591	1606	1567	1519
pancreas	257	226	273	305	277	228	230	259	213	165
<b>Any organ</b>	<b>2003</b>	<b>2074</b>	<b>2187</b>	<b>2190</b>	<b>2106</b>	<b>1975</b>	<b>2041</b>	<b>2063</b>	<b>2021</b>	<b>1942</b>

statistics.eurotransplant.org : 1042P\_All ET : 10.01.2018 : donors are counted for each organ type separately

## Deceased donors used in All ET, by year, by organ used



## Organs transplanted in All ET, by year, by donor type, by organ

Deceased donor	2008	2009	2010	2011	2012	2013	2014	2015	2016	2017
kidney	3522	3590	3739	3633	3472	3200	3384	3460	3307	3126
heart	581	581	632	591	607	589	635	604	587	548
lung	972	999	1111	1181	1313	1316	1298	1193	1271	1233
liver	1489	1570	1670	1679	1595	1466	1537	1566	1528	1467
split liver	117	122	123	91	94	96	109	72	82	94
pancreas	219	191	243	240	224	198	199	192	177	142
pancreatic islets	37	36	30	64	53	31	31	67	36	25
<b>Total</b>	<b>6937</b>	<b>7089</b>	<b>7548</b>	<b>7479</b>	<b>7358</b>	<b>6896</b>	<b>7193</b>	<b>7154</b>	<b>6988</b>	<b>6635</b>
Living donor	2008	2009	2010	2011	2012	2013	2014	2015	2016	2017
kidney	1091	1150	1266	1339	1381	1403	1348	1323	1339	1290
heart					1					
lung		1			8			2		
liver	7	3	6	16	5	3	6	4	15	5
split liver	75	96	132	119	116	130	106	87	107	107
<b>Total</b>	<b>1173</b>	<b>1250</b>	<b>1404</b>	<b>1474</b>	<b>1511</b>	<b>1536</b>	<b>1460</b>	<b>1416</b>	<b>1461</b>	<b>1402</b>
<b>Total all donors</b>	<b>8110</b>	<b>8339</b>	<b>8952</b>	<b>8953</b>	<b>8869</b>	<b>8432</b>	<b>8653</b>	<b>8570</b>	<b>8449</b>	<b>8037</b>

statistics.eurotransplant.org : 2082P\_All ET : 11.01.2018 : counting each individual organ (lung/kidney/split liver)

## Transplants (deceased donor) in Eurotransplant, by year, by organ, 1967-2017

